

Ohio High Schools

- **Batavia Local Schools, Batavia High School**
- **Bethel-Tate Local Schools, Bethel-Tate High School**
- **Cincinnati Public Schools**
- **Clermont West Local School District, West Clermont High School**
- **Clermont Northeast Local School District, Clermont Northeast High School**
- **Felicity-Franklin Local School District, Felicity-Franklin High School**
- **Forest Hills School District**
- **Goshen School District, Goshen High School**
- **Mason City Schools, William Mason High School**
- **Milford Public Schools, Milford High School**
- **New Richmond Exempted Village School District, New Richmond High School**
- **Princeton City School District, Princeton High School**
- **Williamsburg Local School District, Williamsburg High School**



Batavia Local Schools



Superintendent Keith Millard



Facebook: <https://www.facebook.com/batavialocalschools/> Twitter: @bataviaschools

Batavia High School

| 513-732-2341 | 1 Bulldog Pl, Batavia, OH 45103

- **Population: 611**
- **90.3% Caucasian, 2% Hispanic, 2.3% African American, 4.4% Multiracial, 0.5% Asian 0.3% Native American, 0.2% Pacific Islander**
- **38% Economically Disadvantaged**
- **Average Household Income: \$49,398**
- **College Readiness Percentage 14%**
- **High School Leader: Keith Millard (Superintendent Batavia HS) and Felicia Grooms (Principal Batavia HS)**
- **Website: <http://www.bataviaschools.org/>**
- **Social Media: Facebook: <https://www.facebook.com/pages/Aiken-High-School-Cincinnati-Ohio/108505639174352> Twitter: @batavia_hs**



Bethel-Tate Local Schools



Superintendent Melissa Kircher



Facebook: <https://www.facebook.com/BTFightingTigers/> Twitter: TBD

Bethel Tate High School

| 513-363-6700 | 3420 State Route 125, Bethel, OH 45106

- **Population: 433**
- **96.8% Caucasian, 1.4 % Hispanic, /5% African American, .7% Multiracial, .7% Asian**
- **40% Economically Disadvantaged**
- **Average Household Income: \$55,396**
- **College Readiness Percentage TBD**
- **High School Leader: Britteny Cousins (CPS)**
- **Website: <https://www.betheltate.org/>**
- **Social Media: Facebook: <https://www.facebook.com/pages/Bethel-Tate-High-School/105519022815518> Twitter: @BTHStigers**



Cincinnati Public Schools



Superintendent Laura Mitchell



Facebook:

<https://www.facebook.com/CincinnatiPublicSchools/> Twitter: @lamCPS

Aiken High School

| 513-363-6700 | 5641 Belmont Avenue, Cincinnati, OH 45244

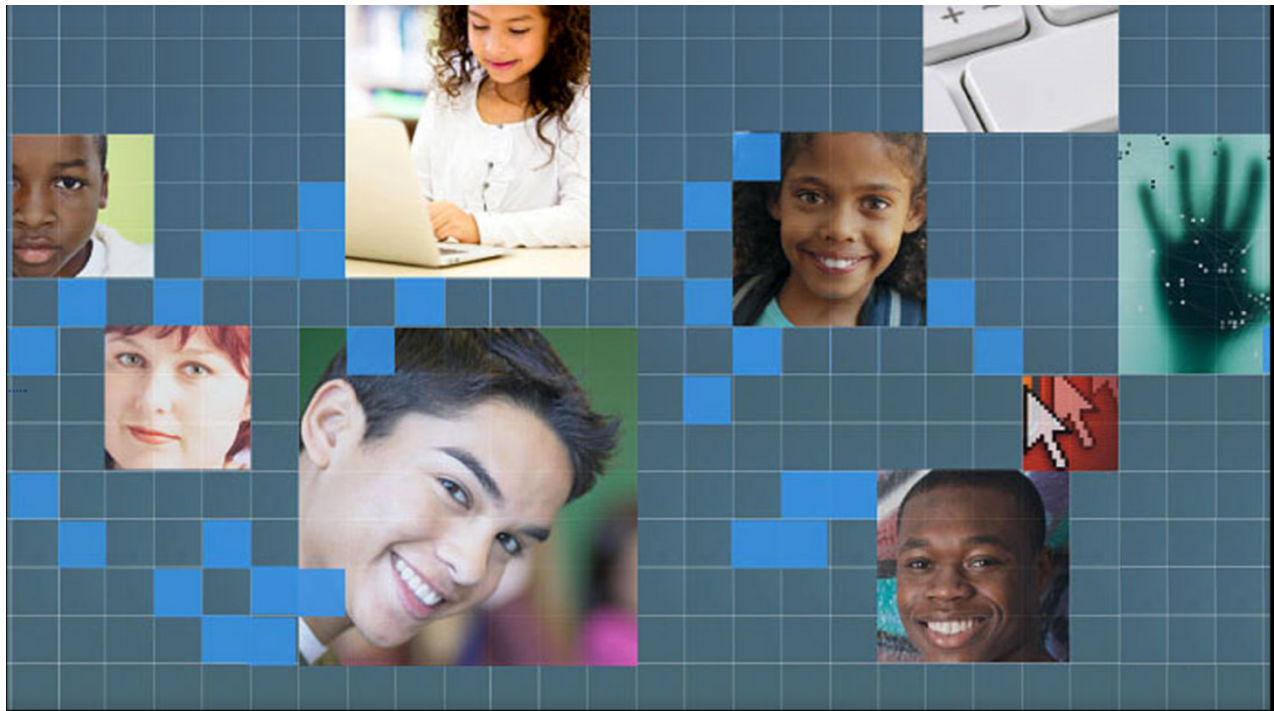
- **Population: 634**
- **4.4% Caucasian, 1.1% Hispanic, 89.3% African American, 4.3% Multiracial, 0.5% Asian**
- **TBD Economically Disadvantaged**
- **Average Household Income: \$34,629**
- **College Readiness Percentage 8.2%**
- **High School Leader: Britteny Cousins (CPS)**
- **Website: <https://aikennewtech.cps-k12.org/>**
- **Social Media: Facebook: <https://www.facebook.com/pages/Aiken-High-School-Cincinnati-Ohio/108505639174352> Twitter: TBD**



Cincinnati Digital Academy

| 513-363-2040 | 425 Ezzard Charles Drive, Cincinnati, OH 45203

- **Population: TBD**
- **TBD% Caucasian, TBD% Hispanic, TBD% African American, TBD% Multiracial, TBD% Asian TBD% Native American**
- **TBD Economically Disadvantaged**
- **Average Household Income: TBD**
- **College Readiness Percentage TBD**
- **High School Leader: Britteny Cousins (CPS)**
- **Website: <https://digitalacademy.cps-k12.org/>**
- **Social Media: Facebook: TBD Twitter: TBD**



Clark Montessori High School

| 513-363-7100 | 3030 Erie Avenue, Cincinnati, OH 45208

- **Population: 707**
- **40% Caucasian, 1.7% Hispanic, 48.9% African American, 7.9% Multiracial, 1.3% Asian 0.1% Pacific Islander**
- **35% Economically Disadvantaged**
- **Average Household Income: \$34,629**
- **College Readiness Percentage: 23.3%**
- **High School Leader: Britteny Cousins (CPS)**
- **Website: <https://clark.cps-k12.org/>**
- **Social Media: Facebook: <https://www.facebook.com/pages/Clark-Montessori-High-School/112485835434052> Twitter: @ClarkMontessori**



Dater (Gilbert A) High School

| 513-363-7200 | 2146 Ferguson Road, Cincinnati, OH 45238

- **Population: 1,176**
- **25.8% Caucasian, 12.6% Hispanic, 55% African American, 6% Multiracial, 0.6% Asian 0.3% Pacific Islander**
- **79% Economically Disadvantaged**
- **Average Household Income: \$34,629**
- **College Readiness Percentage: 15.9%**
- **High School Leader: Britteny Cousins (CPS)**
- **Website: <https://daterhighschool.cps-k12.org/>**
- **Social Media: Facebook: <https://www.facebook.com/DaterHS/>
Twitter: @daterhighschool**



Gamble (James N) Montessori High School

| 513-363-2600 | 2700 Felicity Pl, Cincinnati, OH 45211

- **Population: 448**
- **23% Caucasian, 2.2% Hispanic, 67.6% African American, 5.8% Multiracial, 0.9% Asian 0.4% Native American**
- **35% Economically Disadvantaged**
- **Average Household Income: \$34,629**
- **College Readiness Percentage: 23.8%**
- **High School Leader: Britteny Cousins (CPS)**
- **Website: <https://gamblemontessorihs.cps-k12.org/>**
- **Social Media: Facebook: <https://www.facebook.com/gamblemont/>
Twitter: @gamblemont**



Hughes STEM High School

| 513-363-7400 | 2515 Clifton Ave, Cincinnati, OH 45219

- **Population: 707**
- **4.6 Caucasian, 0.5% Hispanic, 91% African American, 3.4% Multiracial, 0.4% Asian**
- **TBD Economically Disadvantaged**
- **Average Household Income: \$34,629**
- **College Readiness Percentage: 7%**
- **High School Leader: Britteny Cousins (CPS)**
- **Website: <https://hughesstem.cps-k12.org/>**
- **Social Media: Facebook: <https://www.facebook.com/HughesSTEMHS/>
Twitter: @HughesSTEMHS**



Hughes
STEM

Oyler School

| 513-363-4100 | 2121 Hatmaker Street Cincinnati, OH 45204

- **Population: 632**
- **47.5% Caucasian, 6.8% Hispanic, 38.1% African American, 7.3% Multiracial, 0.2% Asian 0.2% Pacific Islander**
- **100% Economically Disadvantaged**
- **Average Household Income: \$34,629**
- **College Readiness Percentage: 10.7%**
- **High School Leader: Britteny Cousins (CPS)**
- **Website: <https://oyler.cps-k12.org/>**
- **Social Media: Facebook: <https://www.facebook.com/pages/Oyler-High-School/217350451806304>**
Twitter: TBD



Riverview East Academy

| 513-363-3400 | 3555 Kellogg Avenue, Cincinnati, OH 45226

- **Population: 594**
- **45.5% Caucasian, 0.8% Hispanic, 43.4% African American, 9.8% Multiracial, 0.5% Asian**
- **96% Economically Disadvantaged**
- **Average Household Income: \$34,629**
- **College Readiness Percentage: 10%**
- **High School Leader: Britteny Cousins (CPS)**
- **Website: <https://rivervieweast.cps-k12.org/>**
- **Social Media: Facebook: <https://www.facebook.com/pages/Riverview-East-Academy/835448376505675> Twitter: @RiverviewHawks**



Shroder High School

| 513-363-6900 | 5030 Duck Creek Road, Cincinnati, OH 45227

- **Population: 719**
- **3.8% Caucasian, 0.1% Hispanic, 91% African American, 5.1% Multiracial**
- **80% Economically Disadvantaged**
- **Average Household Income: \$34,629**
- **College Readiness Percentage: 15.4%**
- **High School Leader: Britteny Cousins (CPS)**
- **Website: <https://shroder.cps-k12.org/>**
- **Social Media: Facebook: <https://www.facebook.com/pages/Shroder-Paideia-High-School/107559409273300> Twitter: TBD**



A college-preparatory school that follows the Paideia method of teaching

The Paideia program provides a rigorous liberal-arts education that builds critical-thinking skills, thus creating productive citizens who go forth to serve the community-at-large. Using the three pillars of Paideia education philosophy — didactic, intellectual coaching and seminar — as a basis, our students are encouraged to become active participants in their educational experience.



Taft (Robert A.) Information Technology High School

| 513-363-6900 | 420 Ezzard Charles Drive, Cincinnati, OH 45214

- **Population: 745**
- **0.9% Caucasian, 0.1% Hispanic, 95.6% African American, 3% Multiracial, 0.4% Asian**
- **97% Economically Disadvantaged**
- **Average Household Income: \$34,629**
- **College Readiness Percentage: 7.6%**
- **High School Leader: Britteny Cousins (CPS)**
- **Website: <https://taftiths.cps-k12.org/>**
- **Social Media: Facebook: <https://www.facebook.com/pages/Robert-A-Taft-Information-Technology-High-School/110532662307823> Twitter: TBD**



Virtual High School

| 513-363-2060 | 425 Ezzard Charles Drive, Cincinnati, OH 45203

- **Population: 502**
- **23.3% Caucasian, 2% Hispanic, 69.7% African American, 4.2% Multiracial, 0.6% Asian, 0.2% Native American,**
- **TBD Economically Disadvantaged**
- **Average Household Income: TBD**
- **College Readiness Percentage: TBD**
- **High School Leader: Britteny Cousins (CPS)**
- **Website: <https://vhs.cps-k12.org/>**
- **Social Media: Facebook: TBD Twitter: TBD**

Participate in
Programs
at Cincinnati
Arts and
Technology
Center



Walnut Hills High School

| 513-363-8400 | 3250 Victory Parkway, Cincinnati, OH 45207

- **Population: 2,778**
- **56.2% Caucasian, 2.1% Hispanic, 29.8% African American, 7.1% Multiracial, 4.7% Asian, 0.1% Native American,**
- **19% Economically Disadvantaged**
- **Average Household Income: \$34,629**
- **College Readiness Percentage: 85.7%**
- **High School Leader: Britteny Cousins (CPS)**
- **Website: <http://www.walnuthillseagles.com/>**
- **Social Media: Facebook: <https://www.facebook.com/pages/Walnut-Hills-High-School/108467019183755> Twitter: @whhs1895**



Withrow University High School

| 513-363-9200 | 2488 Madison Road, Cincinnati, OH 45208

- **Population: 1,242**
- **3.1% Caucasian, 6.4% Hispanic, 87% African American, 1.5% Multiracial, 2% Asian, 0.1% Native American,**
- **TBD Economically Disadvantaged**
- **Average Household Income: \$34,629**
- **College Readiness Percentage: TBD**
- **High School Leader: Britteny Cousins (CPS)**
- **Website: <https://withrow.cps-k12.org/>**
- **Social Media: Facebook: <https://www.facebook.com/pages/Withrow-High-School/108079899214324> Twitter: @TBD**



Woodward Career Technical High School

| 513-363-9300 | 7005 Reading Road, Cincinnati, OH 45237

- **Population: 992**
- **2% Caucasian, .9% Hispanic, 94.7% African American, 2% Multiracial, 0.2% Asian, 0.1% Native American, 0.1% Pacific Islander**
- **99% Economically Disadvantaged**
- **Average Household Income: \$34,629**
- **College Readiness Percentage: 3.7%**
- **High School Leader: Britteny Cousins (CPS)**
- **Website: <https://woodwardcareertech.cps-k12.org/>**
- **Social Media: Facebook: <https://www.facebook.com/pages/Woodward-High-School/105513862815054> Twitter: TBD**



Clermont (West) Local School District



Superintendent Natasha Adams



Facebook: <https://www.facebook.com/westclermont/> Twitter: @WestCler

West Clermont High School

| 513-947-7600 | 4101 Bach Buxton Road, Batavia, OH 45103

- **Population: 2,600**
- **TBD% Caucasian, TBD Hispanic, TBD African American, TBD Multiracial, TBD Asian,**
- **TBD Economically Disadvantaged**
- **Average Household Income: \$59,595**
- **College Readiness Percentage: TBD**
- **High School Leader: Mike Overby (WCHS)**
- **Website: <http://www.westcler.k12.oh.us/14/Home>**
- **Social Media: Facebook: <https://www.facebook.com/WCHSWolves/>
Twitter: @WCHSWolves**



Clermont (Northeast) Local School District



Superintendent Michael Brandt



Facebook: <https://www.facebook.com/pages/Clermont-Northeastern-High-School/109369472415170> Twitter: @CNEHighSchool

Clermont Northeast High School

| 513-625-1211 | 5327 Hutchinson Road, Batavia, OH 45103

- **Population: 400**
- **96% Caucasian, 0.8% Hispanic, 2.5% Multiracial, 0.3% Asian, 0.5% Native American**
- **29% Economically Disadvantaged**
- **Average Household Income: \$54,535**
- **College Readiness Percentage: TBD**
- **High School Leader: TBD**
- **Website: <http://www.cneschools.org/>**
- **Social Media: Facebook: <https://www.facebook.com/CNESchoolDistrict/> Twitter: @cneschools**



Felicity-Franklin Local School District



Superintendent Dave Gibson



Facebook: <https://www.facebook.com/FFLSD/> Twitter: @fflsd

Felicity-Franklin High School

| 513-876-2111 | 105 Market Street, Felicity, OH 45120

- **Population: 251**
- **96.8% Caucasian, 1.2% Hispanic, 0.4% African American 1.6% Multiracial**
- **54% Economically Disadvantaged**
- **Average Household Income: \$57,102**
- **College Readiness Percentage: 8.5%**
- **High School Leader: TBD**
- **Website: http://www.edline.net/pages/felicity-franklin_high_school**
- **Social Media: Facebook: <https://www.facebook.com/FelicityFranklinHighSchool>/Twitter: TBD**



Forest Hills School District



Superintendent Scot Thomas Prebles



Facebook:

<https://www.facebook.com/ForestHillsSchoolDistrict/> Twitter: @FHSchools

Anderson High School

| 513-232-2772 | 7650 Forest Road, Cincinnati OH, 45244

- **Population: 1,142**
- **89.3% Caucasian, 2.1% Hispanic, 1.7 % African American, 3.7% Multiracial, 3.1% Asian**
- **13% Economically Disadvantaged**
- **Average Household Income: \$74,265**
- **College Readiness Percentage 40.8%**
- **High School Leader: John Eckert (Forest Hills)**
- **Website: <https://www.foresthills.edu/anderson/>**
- **Social Media: Facebook: <https://www.facebook.com/ForestHillsSchoolDistrict/> Twitter: @AndersonRedskin**



Turpin High School

| 513-232-7770 | 2650 Bartels Road, Cincinnati, OH 45224

- **Population: 1,199**
- **91.6% Caucasian, 2.7% Hispanic, 1.7 % African American, 2.6% Multiracial, 1.4% Asian**
- **8% Economically Disadvantaged**
- **Average Household Income: \$114,973**
- **College Readiness Percentage 66.1%**
- **High School Leader: John Eckert (Forest Hills)**
- <https://www.foresthills.edu/turpin/>
- **Social Media: Facebook: <https://www.facebook.com/Turpin-High-School-31458280676/> Twitter: @TurpinSpartans**



Goshen School District



Superintendent Darrell Edwards



Facebook:

<https://www.facebook.com/goshenlocal/> Twitter: @GoshenLocal

Goshen High School

| 513-722-2227 | 6707 Goshen Road, Goshen, OH 45122

- **Population: 713**
- **95.2% Caucasian, 2.1% Hispanic, 0.3 % African American, 2.4% Multiracial**
- **54% Economically Disadvantaged**
- **Average Household Income: \$52,664**
- **College Readiness Percentage: 17.8%**
- **High School Leader: Mark Edwards and Darrell Edwards (Superintendent)**
- **Website: <https://ghs.goshenlocalschools.org/>**
- **Social Media: Facebook: <https://www.facebook.com/goshenhs/> Twitter: @GoshenWarriors**



Mason City Schools



Superintendent Jonathon Cooper



Facebook: <https://www.facebook.com/masonohschools/> Twitter: @MasonSchools

William Mason High School

| 513-398-5025 | 6100 Montgomery Road, Mason, OH 45050

- **Population: 3,529**
- **72.3% Caucasian, 3.7% Hispanic, 4.3 % African American, 3.7% Multiracial, 15.7% Asian, 0.2% Native American, 0.1% Pacific Islander**
- **6% Economically Disadvantaged**
- **Average Household Income: \$92,819**
- **College Readiness Percentage: 53.7%**
- **High School Leader: TBD**
- **Website: <http://masoncomets.org/>**
- **Social Media: Facebook: <https://www.facebook.com/pages/William-Mason-High-School/104033689634614> Twitter: @MHSComets**



Milford Public Schools



MILFORD

Exempted Village School District

Superintendent Dr. Anna Cutaia



Facebook: <https://www.facebook.com/MilfordEVSD/> Twitter: @Milford_Schools

Milford High School

| 513-831-2990 | 1 Eagles Way, Milford, OH 45150

- **Population: 1,940**
- **92.2% Caucasian, 2% Hispanic, 2.1% African American, 2.3 % Multiracial, 1.5% Asian**
- **23% Economically Disadvantaged**
- **Average Household Income: \$85,148**
- **College Readiness Percentage: 44.8%**
- **High School Leader: TBD**
- **Website: <https://www.milfordschools.org/>**
- **Social Media: Facebook: <https://www.facebook.com/MilfordHS/> Twitter: TBD**



New Richmond Exempted Village School District



Superintendent Adam Bird



Facebook: <https://www.facebook.com/NREVSD/> Twitter: @NREVSD

New Richmond High School

| 513-553-2616 | 212 Market Street Fl 3rd, New Richmond, OH 45157

- **Population: 2,407**
- **94% Caucasian, 1.7% Hispanic, 1% African American, 2.9 % Multiracial, 0.3% Asian**
- **41.3% Economically Disadvantaged**
- **Average Household Income: TBD**
- **College Readiness Percentage: 15.5%**
- **High School Leader: TBD**
- **Website:**
http://www.nrschools.org/newrichmondhighschool_home.aspx
- **Social Media: Facebook: <https://www.facebook.com/pages/New-Richmond-High-School/108174939203813> Twitter: @NewRichmondHS**



Princeton City School District



Superintendent Tom Burton



Facebook: <https://www.princetonschools.net/> Twitter: @VikingDiff

Princeton High School

| 513-864-1500 | 100 Viking Way, Cincinnati, OH 45246

- **Population: 1,511**
- **27.6% Caucasian, 16% Hispanic, 48% African American, 4.9 % Multiracial, 2.5% Asian, 2.5% Native American, 0.7% Pacific Islander, .3% Native American**
- **60% Economically Disadvantaged**
- **Average Household Income: \$52,934**
- **College Readiness Percentage: 24%**
- **High School Leader: Tom Burton (Superintendent) and Michael Wilson (Principal)**
- **Website: <https://www.princetonschools.net/phs>**
- **Social Media: Facebook: <https://www.facebook.com/PrincetonHighSchoolNJ/> Twitter: @TBD**



Williamsburg Local School District



Superintendent Matt Earley



Facebook: <https://www.princetonschools.net/> Twitter: @1burgschools

Williamsburg High School

| 513-724-2211 | 500 S 5th St, Williamsburg, OH 45176

- **Population: 523**
- **95.4% Caucasian, 1.7% Hispanic, 0.6% African American, 1.9 % Multiracial, 0.2% Asian 0.2% Pacific Islander**
- **38% Economically Disadvantaged**
- **Average Household Income: \$48,102**
- **College Readiness Percentage: 16.1%**
- **High School Leader: Heather Powell (Principal)**
- **Website: <http://burgschools.org/>**
- **Social Media: Facebook:**
<https://www.facebook.com/pages/Williamsburg-High-School/112637942083825> **Twitter: @TBD**

